

7.2, 5

HWK

7-81)

a)  $\frac{3 \text{ miles}}{20 \text{ min}} = \frac{x}{45 \text{ min}}$        $x = 6.75 \text{ miles}$

b)  $y = \frac{3}{20}x$

	(Joe)	(Jasmine)
7-82)	8 songs	12 songs
	10 min.	15 min

$$\frac{8}{10} = \frac{12}{15}$$
$$\frac{4}{5} = \frac{12}{15}$$

Downloading at the same speed!

7-83) new points

$A'(-2, -3)$   $B'(-1, -7)$   $C'(3, -6)$   $D'(2, -3)$

7-84)

a)  ~~$\frac{3.6}{2.4} = \frac{1.5}{3.9}$~~

b)  ~~$\frac{4.2}{7} = \frac{0.6}{7.6}$~~

c)  ~~$\frac{24.8}{3.1} = \frac{8}{11.1}$~~

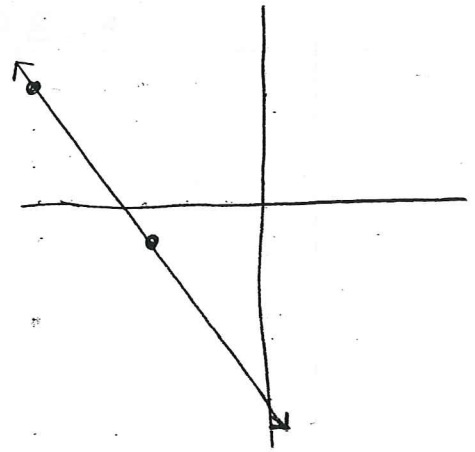
d)  ~~$\frac{-49}{7} = \frac{-7}{0}$~~

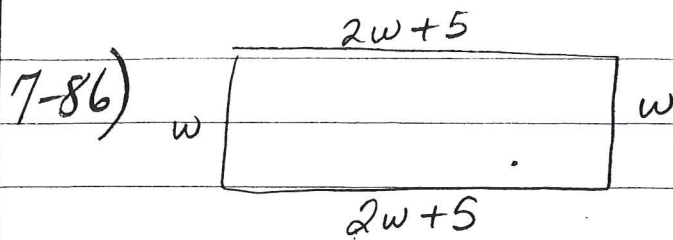
7-85)

a) slope  $-\frac{4}{3}$

b) y-intercept is  $(0, -5)$

c)  $y = -\frac{4}{3}x - 5$





perimeter = 250 ft.

a)  $w = \text{width of law}$   
 $2w + 2(2w + 5) = 250$

b)

$$2w + 2(2w + 5) = 250$$

$$2w + 4w + 10 = 250$$

$$6w + 10 = 250$$

$$\begin{array}{r} -10 \quad -10 \\ \hline 6w = 240 \\ \hline 6 \quad 6 \\ w = 40 \end{array}$$

$w = 40 \text{ ft}$  length =  $2w + 5 = 2(40) + 5$   
 $80 + 5$   
 $\rightarrow$   $85 \text{ ft.}$

c)  $A = bh$   
 $= 40 \cdot 85$   
 $= 3,400 \text{ ft}^2$